

Worktop fastener PJ7 - for extra thin panels from 10 mm

**AHT**  
Beschlaege • Hardware



Fittings and special parts since 1992

## Worktop fastener PJ7 - Bolt L104 mm

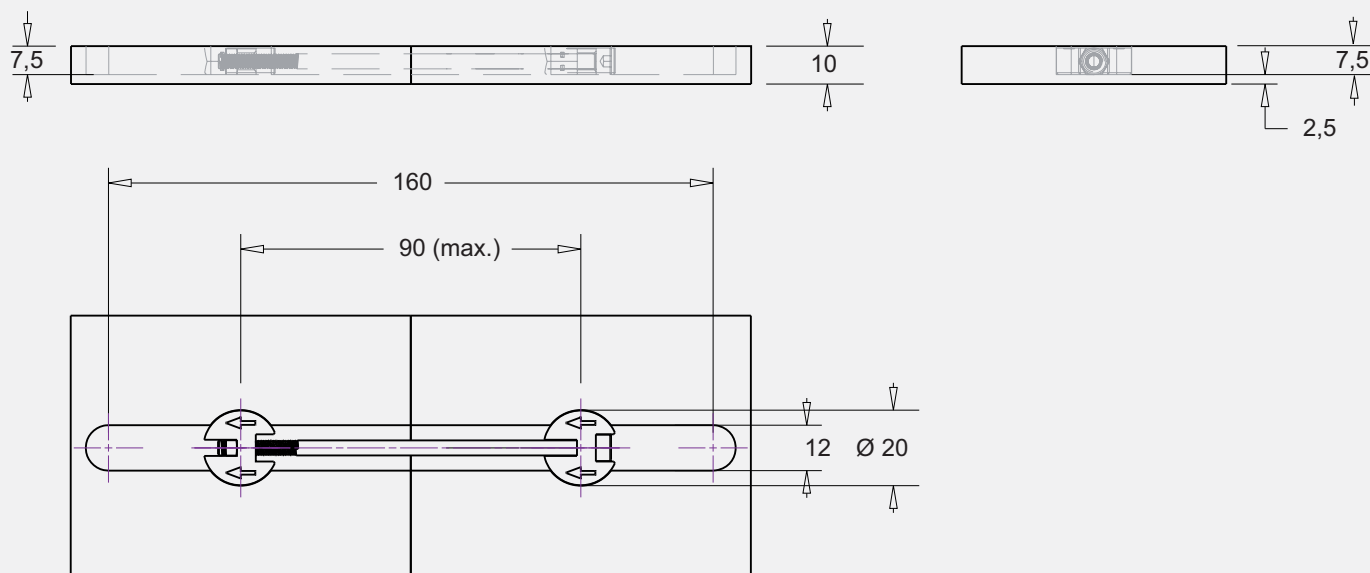
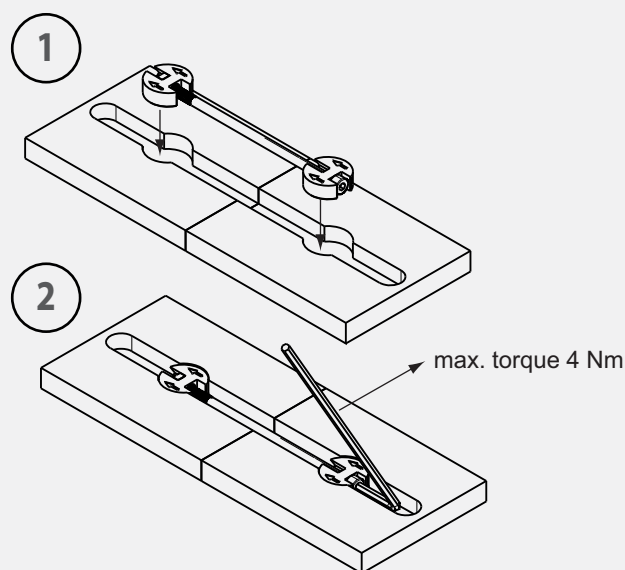
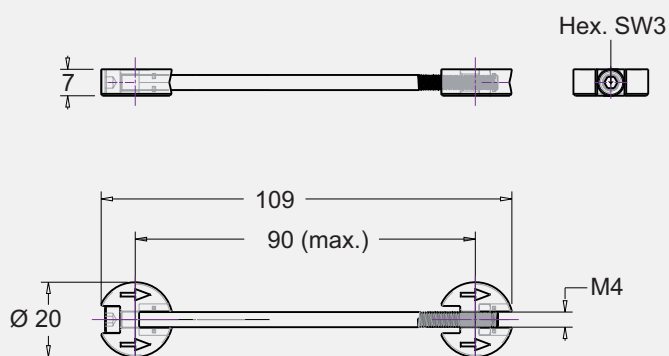
# AHT

Beschlaege • Hardware



Art. PJ7L100.001

- for a simple and secure connection of
- extra-thin panels from 10 mm thickness
- suitable for furniture construction, kitchens,
- shop fitting, contract furnishing, exhibition stands
- housing made of robust black polyamide PA6.
- hexagonal bolt made of galvanized steel.
- other lengths available on request.



### Italy Branch (Export)

AHT Beschlaege GmbH  
S.P. Helvia Recina, KM 6.2  
I-62018 Potenza Picena (MC)  
Email: aht-italia@iht-beschlaege.de  
Tel.: +39 0733 784377  
Internet: www.aht-beschlaege.de

### Head Office

AHT Beschlaege GmbH  
Lilienthalstrasse 16  
D-42719 Solingen  
Email: info@iht-beschlaege.de  
Tel.: +49 212 38377 - 0  
Internet: www.aht-beschlaege.de

